



MOSTYN RACE
SATURDAY, 14th MAY 2022



HIGH WATER: 10.15 HT: 8.76 m

START TIME: 09.00

Race Officer: Andrew Whittle

1 Rules

- a) This is a Handicap Race.
- b) The event will be governed by the Racing Rules of Sailing 2021-2024, WKSC Sailing Regulations, General Sailing Instructions for Club Racing (see WKSC Handbook) and these Sailing Instructions. Where there is a conflict WKSC Sailing Regulations, General Sailing Instructions for Club Racing and these Sailing Instructions take precedence.

2 Entries

- a) The event is open to all WKSC and DSC members (Cruisers, Tidal Classes, Fast and Slow Handicap Dinghies and Multihulls). Boats not having a recognised PN will be given a trial number by the Official Handicapper.
- b) PNs will be identified by class listed on the WKSC PN List 2022 (available on club notice board)

3 Safety

- a) This is a long distance race and competitors are reminded of their responsibilities under WKSC Regulation 1 and personal buoyancy Regulation 4. If the Race Officer has concerns for safety a competitor may be instructed to return to the shore and will be deemed to have retired.
- b) In order to assist the race team please email results@wksc.org.uk with your sail number, boat class and your name if you intend to compete, by **22.00 on Friday 13th May**. By doing so you are accepting these sailing instructions. Entries made after this time will still be accepted.

4 Sign-On and Sign-Off Sheet

All competitors leaving the West Kirby slipway MUST check out and in with the Beachmaster or risk disqualification.

5 Notices to Competitors. Will be posted on the club notice board in front of the club house.

6 Race area. The Dee Estuary.

7 Changes to Sailing Instructions.

Any changes to the sailing instructions will be indicated by flying flag "L" before the warning signal of the race. The flag may be flown from the WKSC clubhouse or the Race Committee Boat, as appropriate. The changes may be posted in the club house or verbally on the water.

8 Starting and Code Flag

There will be a single handicap class start at 09.00. RRS 26 (5,4,1,0) will apply. The class flag will be code flag 'W'.

9 Course for the Mostyn Race.

As shown on the attached course card.

10 Time Limit.

Will be 150 minutes.

11 Protests

As per the General WKSC Sailing Instructions for Club Racing.

COURSE CARD

1 The Committee Boat will be flying the WKSC burgee.

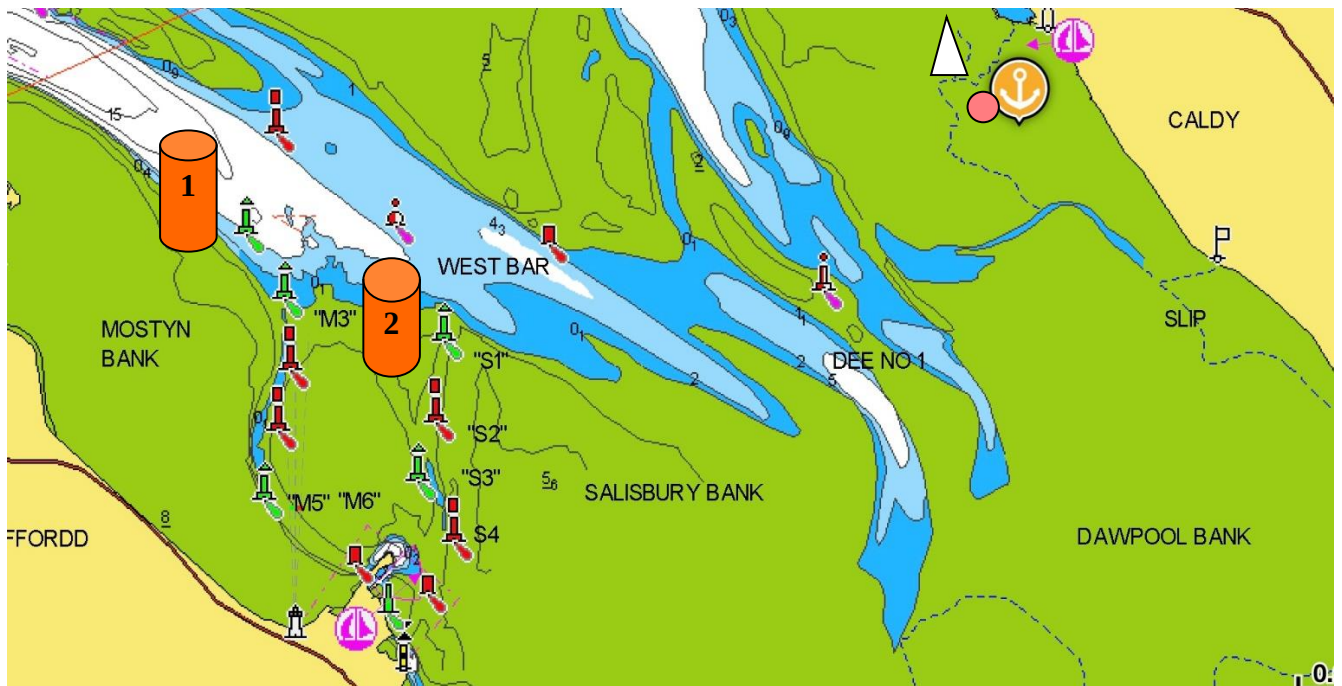
2 The Start Line will be between the Committee Boat and Start Mark (P).

3 The course will be one of the following courses. The course number will be displayed on the side of the Committee Boat at the Warning signal.

Course No	Course
1	Start Line to Mark 1 (P) then to Mark 2 (P) then to Finish Line between "Committee Boat" (P) and Finish Mark (S).
2	Start Line to Mark 2 (P) then to Finish Line between "Committee Boat" (P) and Finish Mark (S).

Marks:	Marks 1 and 2 will be orange pillar buoys
	Start and Finish Mark will be a spherical mark with a flag on top

MARK POSITIONS ARE APPROXIMATE (and not to size) !!



	ORANGE PILLAR BUOY		COMMITTEE BOAT		START AND FINISH MARK
---	--------------------	---	----------------	---	-----------------------